

---

# Device Parameters Summary

**Device ID :** S46235

**Actuator Type:** F1M16.2

**Actuator Mode :** Gimbal-less Dual-Axis Quasistatic

**Mirror Type and Size :** Integrated mirror of 1600um diameter

**Mirror Coating :** Aluminum

**Maximum Mech. Angle - X Axis [degrees] :** 4.6738

**Maximum Mech. Angle - Y Axis [degrees] :** 4.6049

**Maximum Vdifference - X Axis [V] :** 180

**Maximum Vdifference - Y Axis [V] :** 180

**Driver Bias Voltage (Vbias) [V] :** 90

**Maximum Mech. Angle - Coupled Axes [degrees] :** 5.7131

**Resonant Frequency - X Axis [Hz] :** 2339

**Resonant Frequency - Y Axis [Hz] :** 2346

**Quality Factor - X Axis :** 18

**Quality Factor - Y Axis :** 19

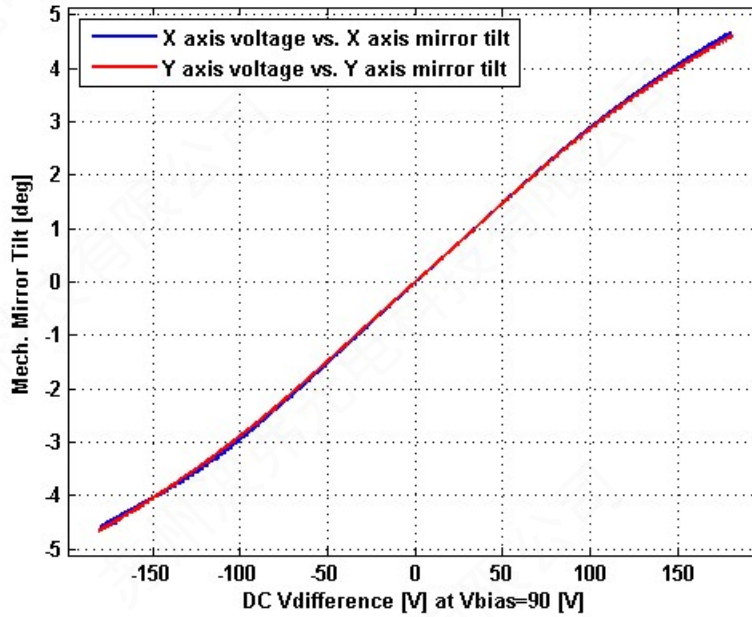
**Recommended LPF Cutoff Frequency (6th Order Bessel) [Hz] :** 1000

**Date and Time Report was Created:** 27-Dec-2019 at 14:41:6

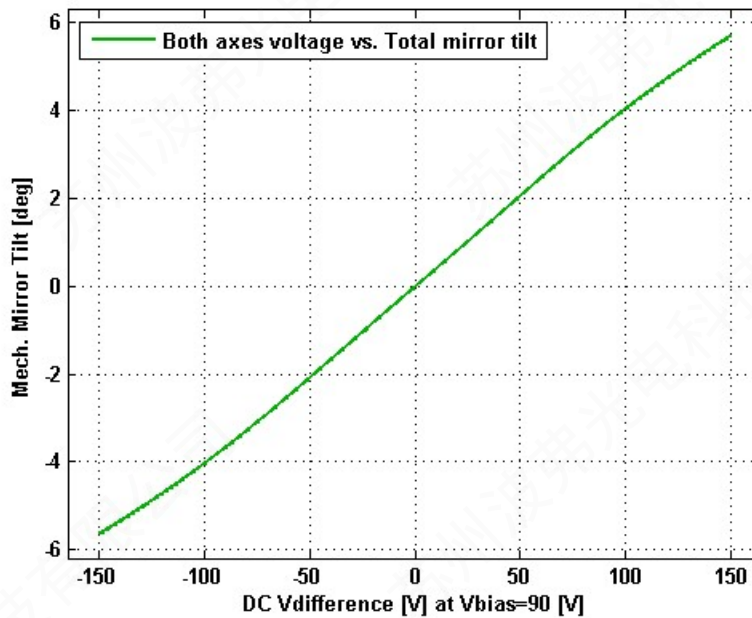
---

# Static Response

## Voltage vs. Mech. Angle - Individual Axes

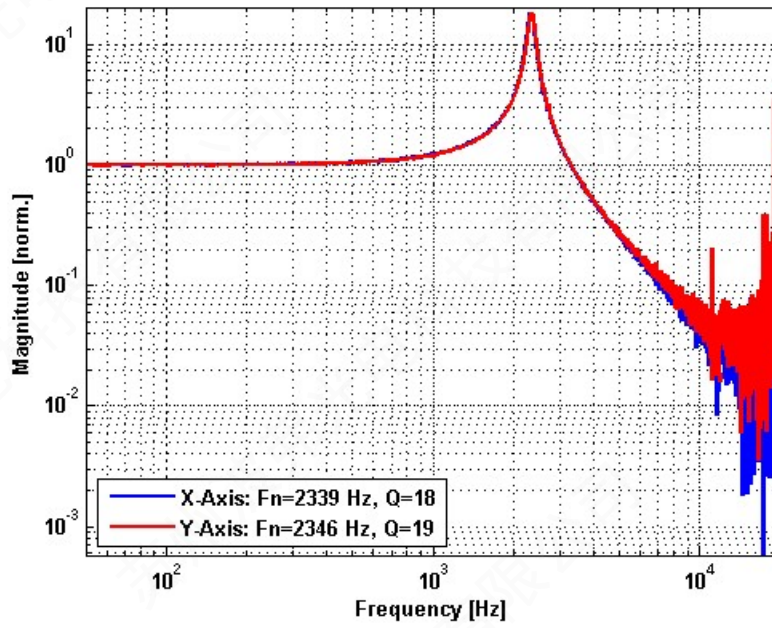


## Voltage vs. Mech. Angle - Coupled Axes

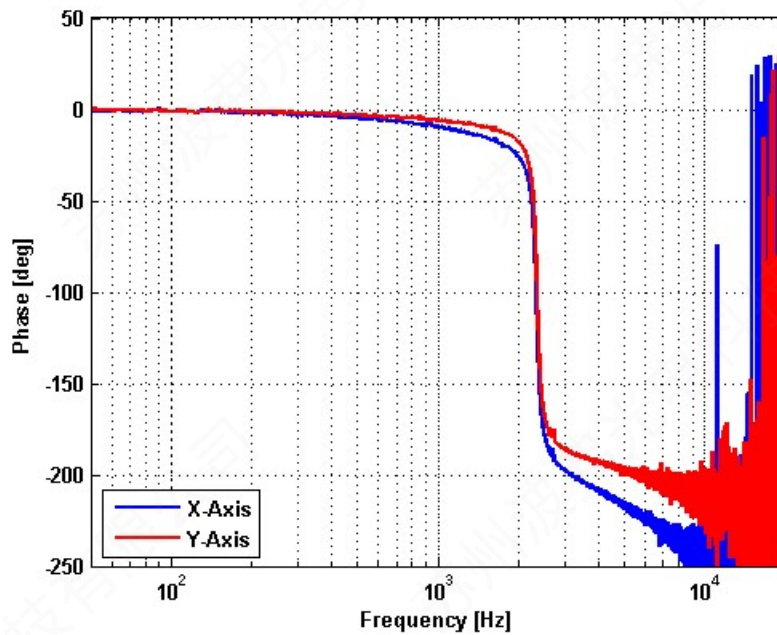


# Frequency Response

## Small Signal Frequency Response - Magnitude

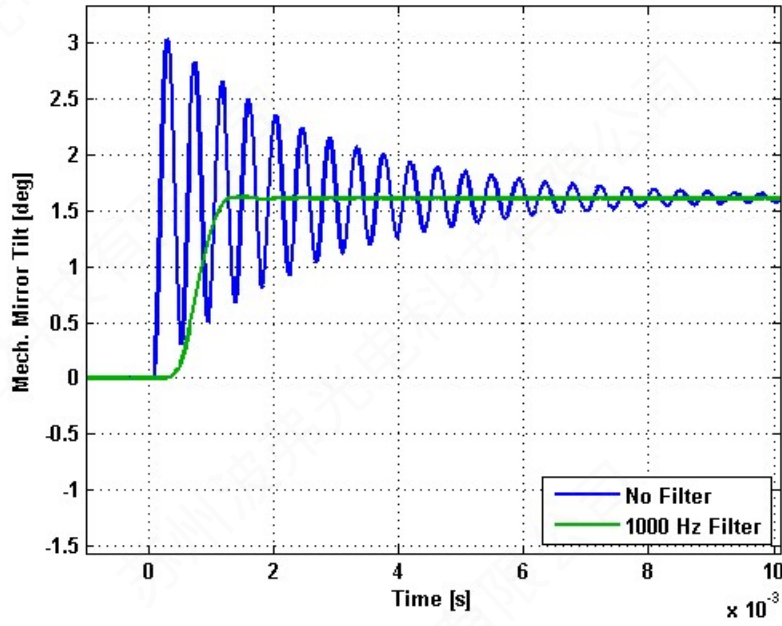


## Small Signal Frequency Response - Phase

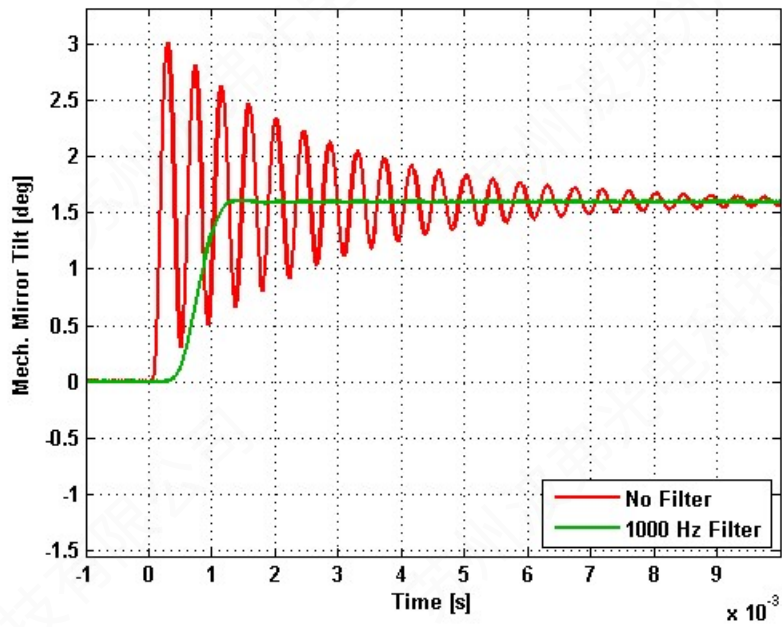


# Step Response

## X-Axis Step Response



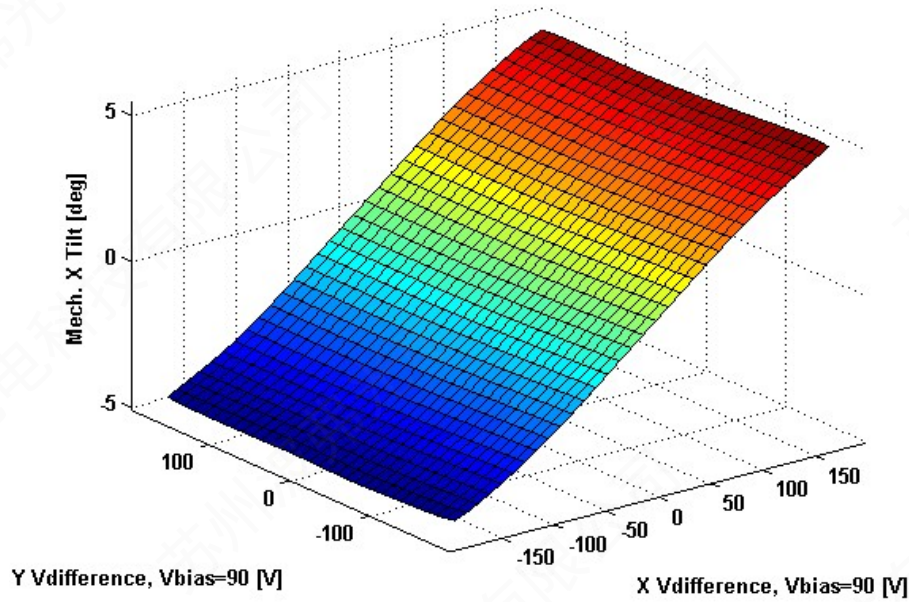
## Y-Axis Step Response



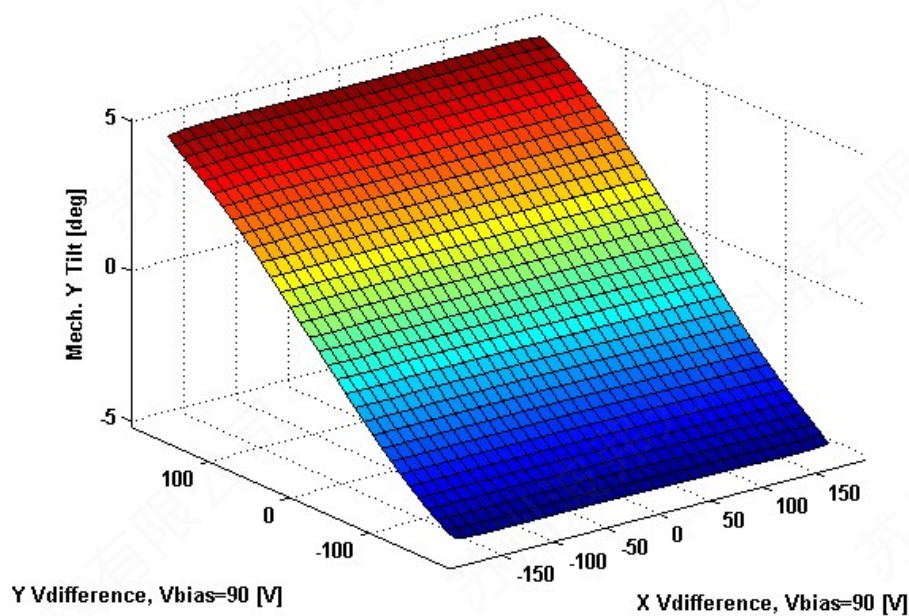
---

# 2D Lookup Tables

## Voltage vs. X Mech. Angle - Lookup Table



## Voltage vs. Y Mech. Angle - Lookup Table





# Y vs. X Tilt - Addressable Mech. Angles

